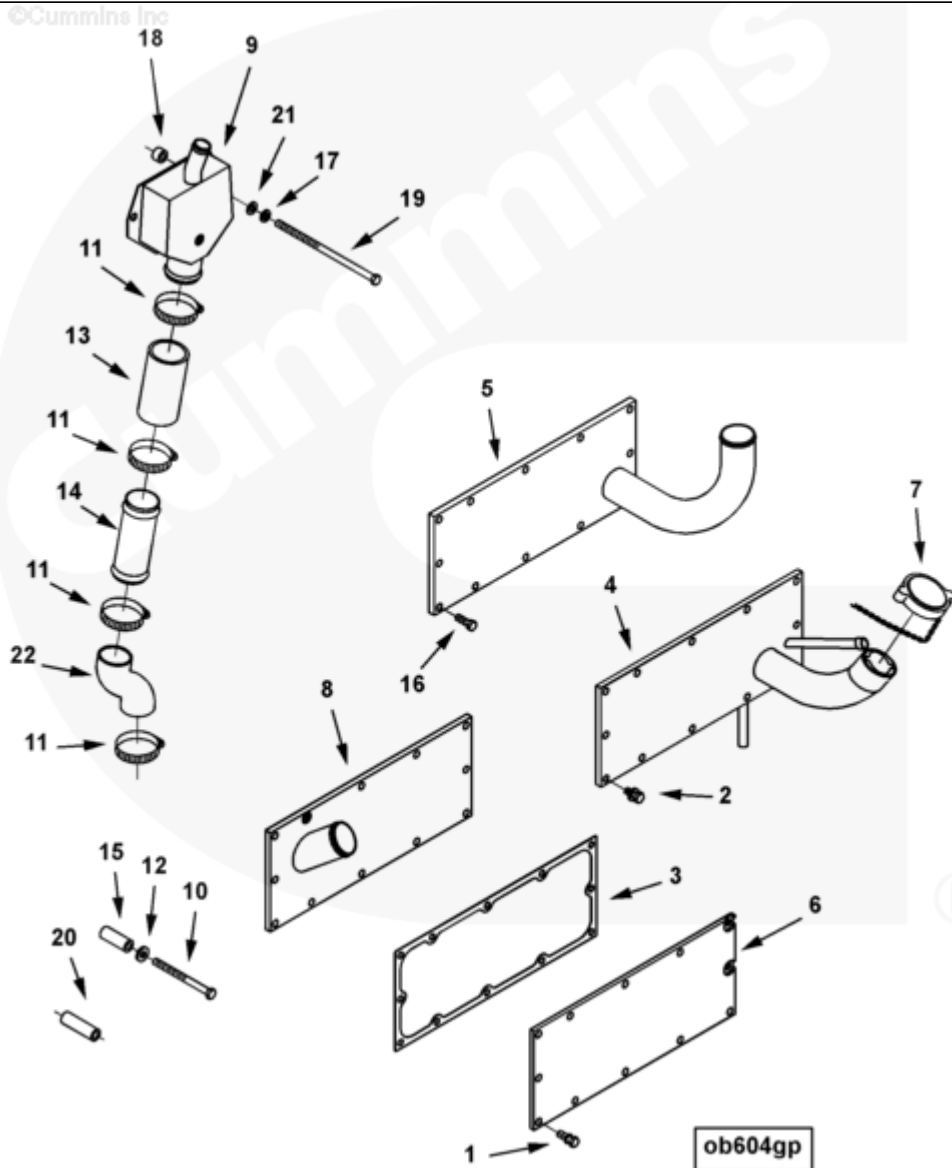




## Parts Catalog - Option Detail

Electronic Parts Catalog - Option Detail				
Option	Group	Graphic	Film Card	Date
OB6172-06	07.02	ob604gp	K38	22-MAR-99
<b>Engines</b>	GTA38, K38, KTA38GC CM558, QSK38 CM2150 K106, QSK38 CM2150 MCRS, QSK38 CM850 MCRS			



[SMALL](#) | [MEDIUM](#) | [LARGE](#)

Cart	Ref No	Part Number	Part Description	Required	Remarks
<input type="button" value="View My Cart"/>					
		OB6172-06	Filler And Breather Dipstick		<a href="#">Oil gauge tube, unmarked...(More)</a>

					dipstick, oil fill, crankcase
					breathers and handhole
					covers. For
					Use with four element lube
					oil filters and high capacity
					oil pan.
					Dipstick and fill cover
					mounted on the left bank
					(port) side of the engine in
					the rear opening. Left bank
					(port) breather cover
					Mounted in the center
					opening. Right bank
					(starboard) breather cover
					mounted
					On the center opening.
					For use on KTA38-M2 engines
					only.
<input type="checkbox"/>	1	<a href="#">3014766</a>	Captive Washer Cap Screw	52	3/8 - 16 x 1 3/64 in.
<input type="checkbox"/>	2	<a href="#">3064321</a>	Captive Washer Cap Screw	6	3/8 - 16 x 7/8 in.
<input type="checkbox"/>	3	<a href="#">3175856</a>	Hand Hole Gasket	6	
<input type="checkbox"/>	4	<a href="#">3178785</a>	Hand Hole Cover	1	
<input type="checkbox"/>	5	<a href="#">3178810</a>	Hand Hole Cover	1	
<input type="checkbox"/>	6	<a href="#">3628229</a>	Hand Hole Cover	3	
<input type="checkbox"/>	7	<a href="#">3629112</a>	Filler Cap	1	
<input type="checkbox"/>	8	<a href="#">3178812</a>	Hand Hole Cover	1	
<input type="checkbox"/>	9	<a href="#">3897782</a>	Crankcase Breather	2	
<input type="checkbox"/>	10	<a href="#">S 169 A</a>	Hexagon Head Cap Screw	1	3/8 - 16 X 4 1/2 Inch.
<input type="checkbox"/>	11	<a href="#">43828 C</a>	Hose Clamp	6	1 9/16 - 2 1/2 in.
<input type="checkbox"/>	12	<a href="#">108330</a>	Plain Washer	1	3/8 in.

<input type="checkbox"/>	13	<a href="#">3177530</a>	Plain Hose	2	
<input type="checkbox"/>	14	<a href="#">3629761</a>	Breather Tube	1	
<input type="checkbox"/>	15	<a href="#">3629762</a>	Mounting Spacer	1	
<input type="checkbox"/>	16	<a href="#">S 112</a>	Hexagon Head Cap Screw	12	3/8 - 16 X 1 in.
<input type="checkbox"/>	17	<a href="#">S 604</a>	Lock Washer	2	3/8 in.
<input type="checkbox"/>	18	<a href="#">63385</a>	Mounting Spacer	2	
<input type="checkbox"/>	19	<a href="#">3081735</a>	Hexagon Head Cap Screw	2	
<input type="checkbox"/>	20	<a href="#">3202032</a>	Mounting Spacer	2	
<input type="checkbox"/>	21	<a href="#">3628902</a>	Plain Washer	2	
<input type="checkbox"/>	22	<a href="#">3630852</a>	Molded Hose	1	

© 2019 Cummins Inc., Box 3005, Columbus, IN 47202-3005 U.S.A.  
Terms of Use and Disclaimers | Recommended System Requirements  
Need Assistance? Please click on the Contact Us button in the top right corner of any page.